



## Thaw and Culture Details

Cell Line Name	<b>STAN040i-119-2</b>	
WiCell Lot Number	<b>DB30930</b>	
Provider	Stanford University – Laboratory of Dr. Marlene Rabinovitch	
Banked By	Stanford University – Laboratory of Dr. Marlene Rabinovitch	
Thaw and Culture Recommendations	WiCell recommends thawing 1 vial into 1 well of a 6 well plate.	
Culture Platform	Feeder Independent	
	Medium: E8	
	Matrix: Matrigel®	
Protocol	WiCell Feeder Independent E8 Medium Protocol	
Passage Number	p10 These cells were cultured for 10 passages prior to freeze and post reprogramming. Add +1 to the passage number to best represent the overall passage number of the cells at thaw.	
Date Viald	26-October-2015	
Vial Label	10/26/2015 E 119 D####-### ip 119FSVNOC2 P10 V#####	The label on vial only includes information applicable to the entire lot. “D####-###” and “V#####” are vial specific and therefore are not included on this CoA.
Biosafety and Use Information	Appropriate biosafety precautions should be followed when working with these cells. The end user is responsible for ensuring that the cells are handled and stored in an appropriate manner. WiCell is not responsible for damages or injuries that may result from the use of these cells. Cells distributed by WiCell are intended for research purposes only and are not intended for use in humans.	

## Testing Performed by WiCell

Test Description	Test Provider	Test Method	Test Specification	Result
Karyotype by G-banding	WiCell	SOP-CH-003	Expected karyotype	See Report
Post-Thaw Viable Cell Recovery	WiCell	SOP-CH-305	Recoverable attachment after passage	Pass
Identity by STR	UW Translational Research Initiatives in Pathology Laboratory	PowerPlex 16 HS System by Promega	Defines profile	Pass
Sterility	Steris	ST/07	Negative	Pass
Mycoplasma	WiCell	SOP-QU-004	Negative	Pass

## Testing Reported by Provider

Test Description	Method	Result
Identity	SNP	iPSCs match the donor material
Mycoplasma	Lonza MycoAlert™ kit	Negative

The Provider stated that the additional analysis listed below may have been performed for this cell line. For more information, publication and dbGaP links, where available, are provided on the cell line specific web page on the WiCell website.

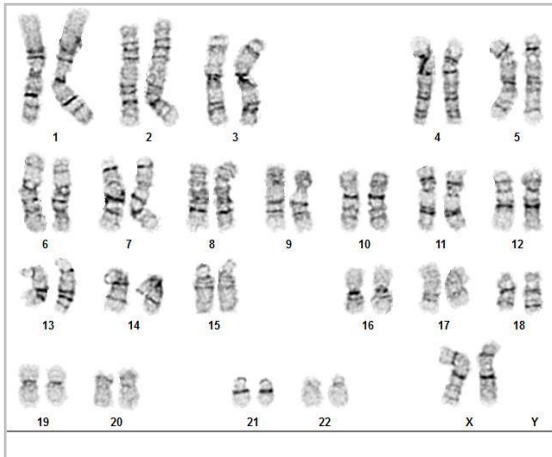
- Infinium® Expanded Multi-Ethnic Genotyping Array (MEGA<sup>EX</sup>)



Approval Date	Quality Assurance Approval
04-June-2016	<p style="text-align: right;">1/17/2019</p> <p>X JKG _____ JKG Quality Assurance Signed by: Gay, Jenna</p>

**Date Reported:** Thursday, December 20, 2018  
**Cell Line:** STAN040i-119-2-DB30930 14145  
**Passage#:** 12  
**Date of Sample:** 12/14/2018  
**Specimen:** Human IPS  
**Results:** 46,XX

**Cell Line Sex:** Female  
**Reason for Testing:** Lot Release Testing  
**Investigator:** [REDACTED], WiCell



**Cell:** 45  
**Slide:** G02  
**Slide Type:** Karyotype  
**Total Counted:** 20  
**Total Analyzed:** 8  
**Total Karyogrammed:** 4  
**Band Resolution:** 425 - 525

**Interpretation:**

**This is a normal karyotype; no clonal abnormalities were detected at the stated band level of resolution.**

**Completed by:** [REDACTED], CG(ASCP)  
**Reviewed and Interpreted by:** [REDACTED] PhD, FACMG

**Date:** \_\_\_\_\_ **Sent By:** \_\_\_\_\_ **Sent To:** \_\_\_\_\_ **QC Review By:** \_\_\_\_\_

*Limitations: This assay allows for microscopic visualization of numerical and structural chromosome abnormalities. The size of structural abnormality that can be detected is >3-10Mb, dependent upon the G-band resolution obtained from this specimen. For the purposes of this report, band level is defined as the number of G-bands per haploid genome. It is documented here as "band level", i.e., the range of bands determined from the four karyograms in this assay. Detection of heterogeneity of clonal cell populations in this specimen (i.e., mosaicism) is limited by the number of metaphase cells examined, documented here as "# of cells counted".*

*This assay was conducted solely for listed investigator/institution. The results of this assay are for research use only. Unless otherwise mutually agreed in writing, the services provided to you hereunder by WiCell Research Institute, Inc. ("WiCell") are governed solely by WiCell's Terms and Conditions of Service, found at [www.wicell.org/privacyandterms](http://www.wicell.org/privacyandterms). Any terms you may attach to a purchase order or other document that are inconsistent, add to, or conflict with WiCell's Terms and Conditions of Service are null and void and of no legal force or effect.*



HISTOLOGY - IHC - MOLECULAR - IMAGING

Department of Pathology and Laboratory Medicine  
TRIP Laboratory (Molecular)  
<https://research.pathology.wisc.edu/trip/>  
(608) 265-9168

# Short Tandem Repeat Analysis



Your Lab Partner

[characterization@wicell.org](mailto:characterization@wicell.org)  
(608) 316-4145

**Sample Report:**

14145-STR  
**Sample Name on Tube:** 14145-STR  
75.2 ng/ $\mu$ L, (A260/280=1.84)  
**Sample Type:** Cells  
**Cell Count:** ~2 million cells

**Requestor:**

WiCell Research Institute  
Quality Assurance Department

**Receive Date:** 01/02/19

**Report Sent:** 01/07/19  
**Assay Date:** 01/02/19  
**File Name:** STR 190103 revised wmr  
**Report Date:** 01/07/19

STR Locus	STR Genotype Repeat #	STR Genotype
FGA	16-18,18.2,19,19.2,20,20.2,21,21.2,22, 22.2, 23, 23.2, 24, 24.2, 25, 25.2, 26-30, 31.2, 43.2, 44.2,45.2, 46.2	Identifying information has been redacted to protect donor confidentiality. If more information is required, please, contact <a href="#">WiCell's Technical Support</a> .
TPOX	6-13	
D8S1179	7-18	
vWA	10-22	
Amelogenin	X,Y	
Penta_D	2.2, 3.2, 5, 7-17	
CSF1PO	6-15	
D16S539	5, 8-15	
D7S820	6-14	
D13S317	7-15	
D5S818	7-16	
Penta_E	5-24	
D18S51	8-10, 10.2, 11-13, 13.2, 14-27	
D21S11	24,24.2,25,25.2,26-28,28.2,29,29.2, 30, 30.2,31, 31.2,32,32.2,33,33.2, 34,34.2,35,35.2,36-38	
TH01	4-9,9.3,10-11,13.3	
D3S1358	12-20	

**Results:** Based on the 14145-STR cells submitted by WiCell QA dated and received on 01/02/19, this sample (Label on Tube: 14145-STR) defines the STR profile of the human stem cell line STAN040i-119-2 comprising 28 allelic polymorphisms across the 15 STR loci analyzed.

**Interpretation:** No STR polymorphisms other than those corresponding to the human STAN040i-119-2 stem cell line were detected and the concentration of DNA required to achieve an acceptable STR genotype (signal/noise) was equivalent to that required for the standard procedure (~1 ng/amplification reaction) from human genomic DNA. This result suggests that the 14145-STR sample submitted corresponds to the STAN040i-119-2 stem cell line and was not contaminated with any other human stem cells or a significant amount of mouse feeder layer cells.

**Sensitivity:** Sensitivity limits for detection of STR polymorphisms unique to either this or other human stem cell lines is ~2-5%.

X *RMB*

Digitally Signed on 01/07/19

X *WMR*

Digitally Signed on 01/07/19

██████████, BA  
TRIP Laboratory, Molecular

██████████ PhD, Director / Co-Director  
UWHC Molecular Diagnostics Laboratory / UWSPH TRIP Laboratory

Testing was accomplished by analysis of human genetic polymorphisms at STR loci. This methodology has not yet been approved by the FDA and is for investigational use only.

Acknowledge TRIP in your publications, posters & presentations. For details, see: <http://www.pathology.wisc.edu/research/trip/acknowledging>  
Unless otherwise mutually agreed in writing, the services provided to you hereunder by WiCell Research Institute, Inc. ("WiCell") are governed solely by WiCell's Terms and Conditions of Service, found at <https://www.wicell.org/media.acux/ca76d97c-862a-43f3-b02a-ab2d1e619100>. Any terms you may attach to a purchase order or other document that are inconsistent, add to, or conflict with WiCell's Terms and Conditions of Service are null and void and of no legal force or effect.

# Native Product Sterility Report



WiCell  
504 S Rosa Road, Rm 101  
Madison, WI 53719

SAMPLE #: 18120565  
DATE RECEIVED: 06-Dec-18  
TEST INITIATED: 11-Dec-18  
TEST COMPLETED: 25-Dec-18

SAMPLE NAME / DESCRIPTION: STAN027i-30-2 DB30909 14151  
STAN030i-46-1 DB30936 14152  
STAN039i-119-1 DB30921 14153  
STAN067i-168-1 DB31156 14154  
STAN071i-179-1 DB31091 14155  
STAN026i-30-1 DB30903 14156  
STAN031i-46-2 DB30945 14157  
STAN040i-119-2 DB30930 14158  
STAN068i-168-2 DB31162 14159  
STAN072i-179-2 DB31153 14160

UNIQUE IDENTIFIER: NA

## TEST RESULTS:

# Tested	# Positives (Growth)	- Control
10	0	2 Negatives

## TEST SUMMARY:

# Samples	Media Type	Volume (mL)	Incubation Temperature (° C)	Incubation Duration (Days)
10	TSB	40	20-25	14
10	FTG	40	30-35	14

REFERENCE: Processed according to LAB-003: Sterility Test Procedure

PD #: 000053

TEST METHODOLOGY: USP - Direct Transfer

COMMENTS: NA

REVIEWED BY 

DATE 31 DEC 18

Specific test results may not be indicative of the characteristics of any other samples from the same lot or similar lots. This test report shall not be reproduced, except in full, without prior written approval. Liability is limited to the costs of the tests. Results applied to samples as received.



# Mycoplasma Detection Assay Report

Testing Performed by WiCell

Lot Release Testing

December 06, 2018

FORM SOP-QU-004.01

Version G Edition 02

Reported by: AP

Reviewed by: JB

BD Monolight 180

#	Sample Name	Reading A			Reading B			Ratio B/A	Result	Comments/Suggestions
		RLU1	RLU2	Ave	RLU1	RLU2	Ave			
1	STAN040i-119-2-DB30930 14145	294	298	296	99	98	98.5	0.33	Negative	
2	Positive (+) Control	475	470	472.5	51430	51512	51471	108.93	Positive	
3	Negative (-) Control	782	805	793.5	116	110	113	0.14	Negative	

